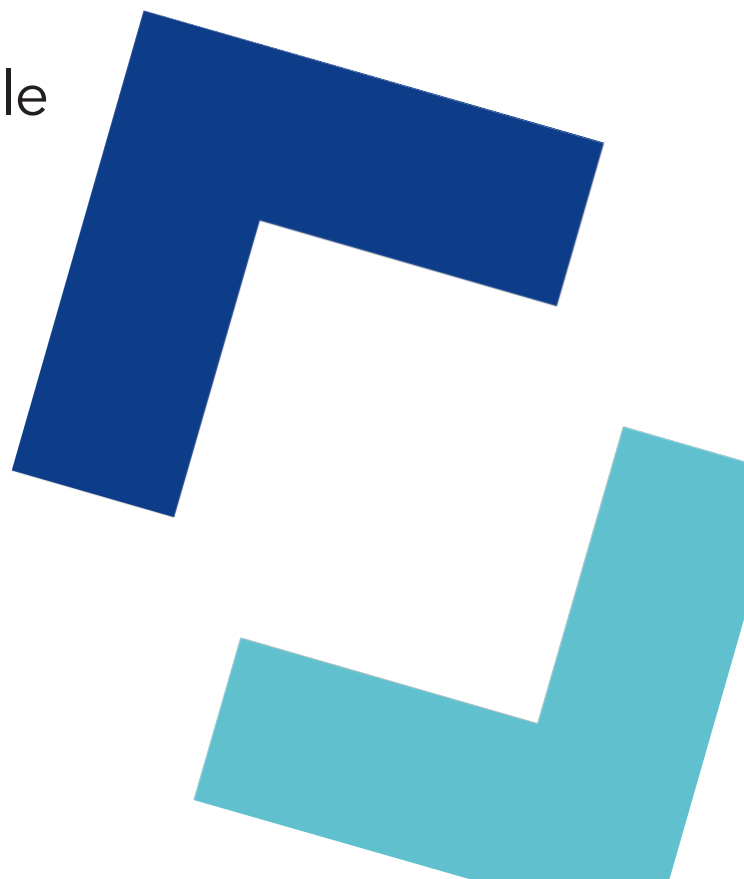




# Farnborough Road, Clifton

Two-bedroom flat  
Independent living for people  
aged 55 or over

 ncha



# Specifications

## Kitchen

- Fitted modern kitchen
- Integrated oven and hob
- Stainless steel extractor hood
- Vinyl flooring

## Shower room

- Wet room with walk-in shower
- Support aids from Invisible creations
- Vinyl flooring

## Heating

- Electric - Air Source Heat Pumps
- Double glazed windows

## External

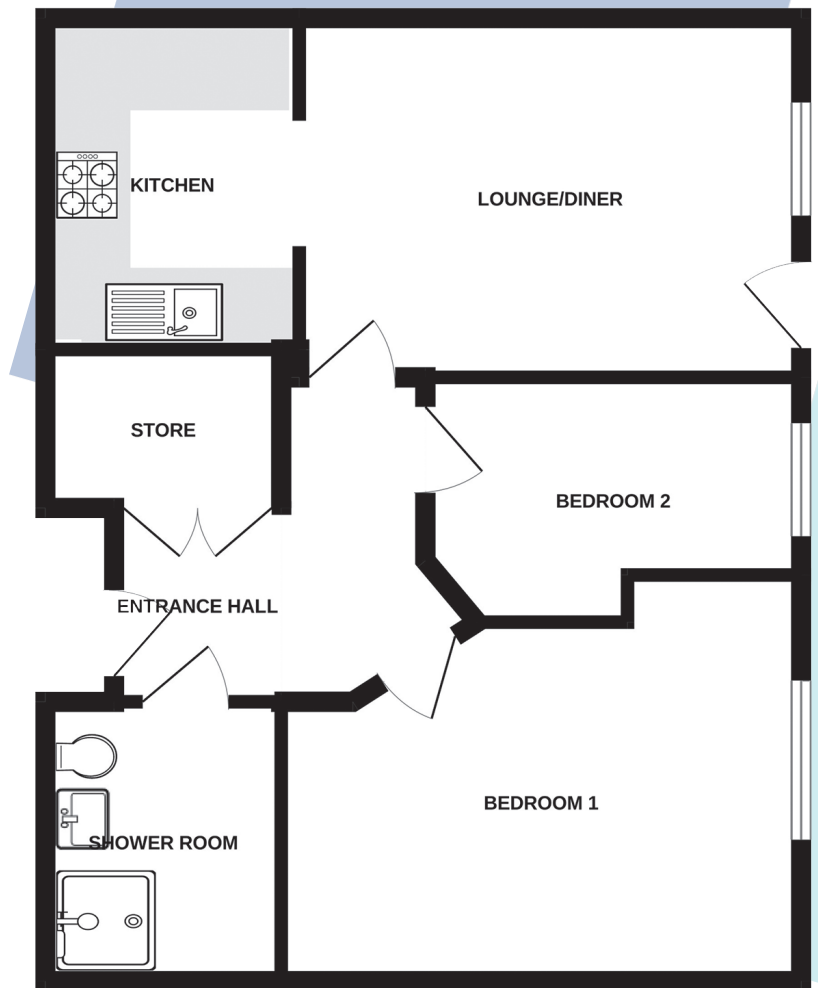
- Patio or balcony
- Communal car parking
- Communal garden

## Decoration

- White walls and ceilings
- White gloss painted woodwork

## Other

- Lift
- Scooter storage



# Energy assessment

- Predicted energy assessment – A

# Key dimensions

Room	Dimensions
Lounge/dining	4.417m x 3.140m
Kitchen	2.290m x 2.907m
Bedroom 1	4.657m x 3.200m
Bedroom 2	3.300m x 2.150m

Any measurements quoted are approximate and must be checked on site and against the layout, which may vary due to unforeseen circumstances. Floor plans may be mirror handed. These details have been produced for illustrative purposes only and does not form any part of a contract or constitute an offer. Actual specification may vary from that shown in floor plan.

## How to find us

The flats are currently being built on the old South Nottingham College site off Farnborough Road in Clifton in Nottinghamshire. If using a SatNav, the postcode is NG11 8LU.